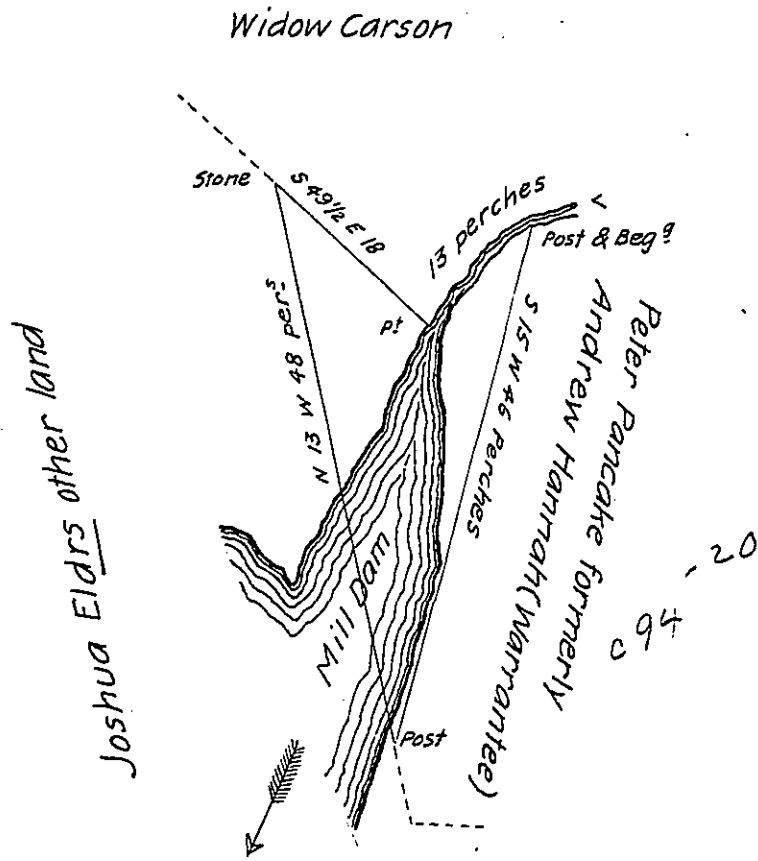


Courses & Dist^s up Creek.
N 35 E 9 perches
N 69 E 4 to Beg.
13



Surveyed the 25th day of August 1814 for Joshua Elder the above described tract of land situate in Swatara Township Dauphin County containing two acres eighty perches and allowance of six per cent by his warrant of the 2nd June 1814.

Thomas Smith D.S.

To Richard T. Leech Esquire }
Surveyor General Pa

IN TESTIMONY that the above is a copy of the original remaining on file in the Department of Internal Affairs of Pennsylvania, made conformably to an Act of Assembly approved the 16th day of February, 1833, I have hereunto set my Hand and caused the Seal of said Department to be affixed at Harrisburg, this tenth day of November 1904

James D. Brown
Secretary of Internal Affairs.